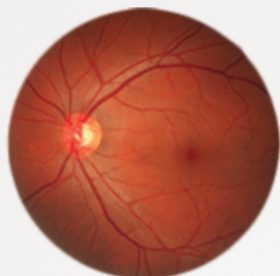
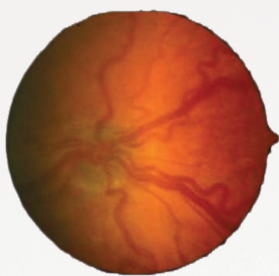


# RETINOPATHY OF PREMATURITY

## FACTSHEET



NORMAL RETINA



RETINOPATHY OF PREMATURITY

- A potentially blinding disease
- Can affect infant less than equal to 34 weeks or weighing 2 kgs or less at birth
- Starts 2-4 weeks after birth

### CURRENT SCENARIO

**1** OUT OF **10**

Live births in India are preterm.

**3** OUT OF **100**

Preterm infants are at risk of developing Sight-Threatening ROP.

*Timely screening is the only way to identify these infants.*

### Preterm birth/Low Birth Weight



*The preterm infants, whether they develop ROP or not, are also at increased risk of other eye conditions and need regular eye examination till the age of 18 years.*

## FACTORS LEADING TO PRETERM BIRTHS



Infertility Treatment



Twins & Triplets



Heavy Smoking



Anaemia



Diabetes



Pre-eclampsia

## WHAT ARE THE PREVENTIVE MEASURES FOR ROP



### IN DELIVERY ROOM

- Administer Antenatal steroids for 'threatened preterm delivery'
- Maintain aseptic protocol
- Provide gentle resuscitation
- Avoiding 100% supplemental oxygen

### IN SNCU/NICU

- Deliver oxygen carefully
- Maintain aseptic protocol
- Promote breastfeeding
- Avoid unnecessary blood transfusion

*Screen all preterm babies in SNCU, within the first 30 days of life or before discharge, whichever is earliest*

## THE TREATMENT



- Sometimes, ROP regresses on its own. Such cases need regular eye examination till blood vessels mature.
- Laser – for diagnosed Sight-Threatening ROP cases
- Vitreo Retinal Surgery – for advanced cases
- The neonatologists, paediatricians, ophthalmologists, nurses and other health care professionals should work together as a team to prevent ROP.

*Improve newborn care to ensure every preterm is screened for ROP*

# RETINOPATHY OF PREMATURITY INDIA INITIATIVE

A 5-year programme aimed at developing and integrating services for detection and treatment of Retinopathy of Prematurity (ROP)

Supported by The Queen Elizabeth Diamond Jubilee Trust

## PROGRAMME GOAL

To achieve a reduction in avoidable blindness due to ROP in special new-born care units (SNCUs) through early screening, detection and treatment.

## APPROACH

Establishing models of sustainable and scalable services for the detection and treatment of retinopathy of prematurity, which are integrated into the government of India's health system at every level.

## PROGRAMME AREAS

- 1 SITUATION ANALYSIS AND SERVICE MAPPING
- 2 DEVELOP AND STRENGTHEN ROP PROGRAMS IN MEDICAL COLLEGES & DISTRICT-LEVEL, SNCUS (IN SELECTED STATES), AND IN LARGE GOVERNMENT NEONATAL UNITS
- 3 INCREASING THE CAPACITY OF NEONATAL HEALTH CARE TEAMS TO DELIVER HIGH QUALITY CLINICAL CARE
- 4 INCREASE AWARENESS AMONG RELEVANT PROFESSIONAL GROUPS
- 5 ADVOCACY WITH MINISTRIES OF HEALTH AND OTHER STAKEHOLDERS
- 6 DEVELOP AND IMPLEMENT AN INFORMATION, COMMUNICATION AND EDUCATION STRATEGY TO SUPPORT PARENTS
- 7 MONITORING AND EVALUATION
- 8 DISSEMINATION OF INFORMATION VIA A DEDICATED WEBSITE

Working together with the state governments, private eye care and neonatal partners to screen for Retinopathy of Prematurity

# ROP Project Implementation sites (Districts) in India

**5** STATES

**10** EYE CARE &  
NEONATAL PARTNERS



■ **Rajasthan**

Jaipur, Bharatpur & Alwar

■ **Madhya Pradesh**

Indore, Dhar, Sehore & Ujjain

■ **Odisha**

Mayurbhanj, Balasore, Ganjam & Cuttack

■ **Maharashtra**

Nasik, Thane, Pune, Osmanabad & Nagpur

■ **Telangana**

Sangareddy, Nalgonda & Hyderabad

## About the Trust

The Queen Elizabeth Diamond Jubilee Trust is a charitable foundation established in 2012 to mark and celebrate Her Majesty The Queen's sixty year contribution to the Commonwealth. The mission of The Trust is to enrich the lives of people from all the backgrounds within the commonwealth by working with partners towards eliminating avoidable blindness and empowering a new generation of young leaders.

**For more information please  
contact us at [rop.india@iiphh.org](mailto:rop.india@iiphh.org)**